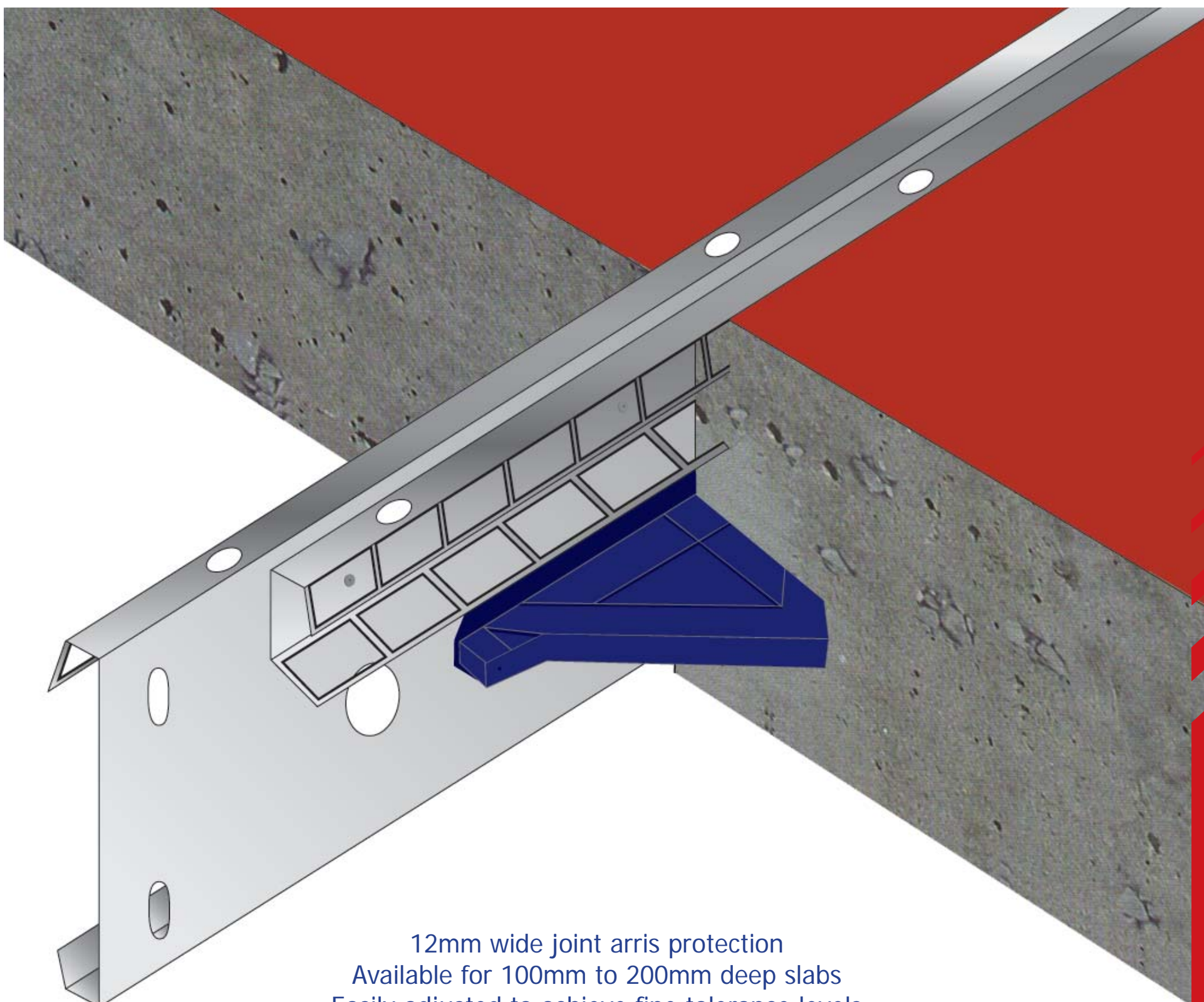


BETAJOINT

**AN EVOLUTION IN
JOINT ARMOURING
AND LOAD TRANSFER**

PATENT GRANTED
UK PATENT No 0526060.9



12mm wide joint arris protection
Available for 100mm to 200mm deep slabs
Easily adjusted to achieve fine tolerance levels
Load transfer provision by Permaban Plate Dowel Systems

Standard Sizes:
100/125/150/175

BetaTop Joint 'leave-in-place' Formwork System

For light to medium duty floor applications.

BetaTop Joint

Manufactured from 2mm galvanised steel plate and supplied with a separate second section to provide a double 12mm wide flat top joint to protect both sides of the joint arris.

For Use In . . .

BetaJoint can be used for tied or contraction joints, ground-bearing or upper floors, internal or external and Metal Deck.

Eliminated Corner Radius

The punched square top edge provides a neat finish at the joint arris with less chance of the concrete spalling as it forms around a folded radius.

Joint Arris Protection

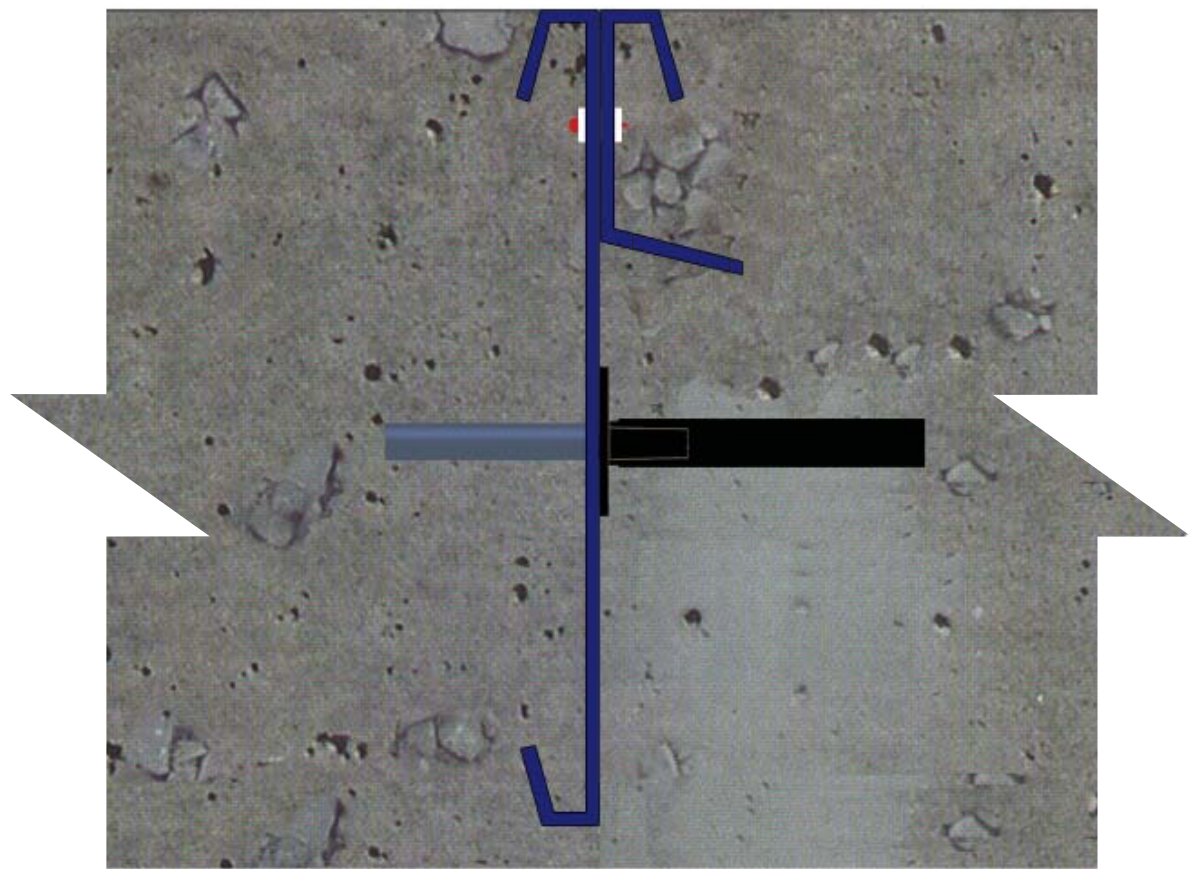
The second section is fixed to the first section with rivets which are designed to fail as the concrete shrinks and the joint opens. BetaJoint eliminates the expensive and time-consuming task of removing timber over dowel or tie bars and possible damage to concrete joint edge.

Rapid Installation

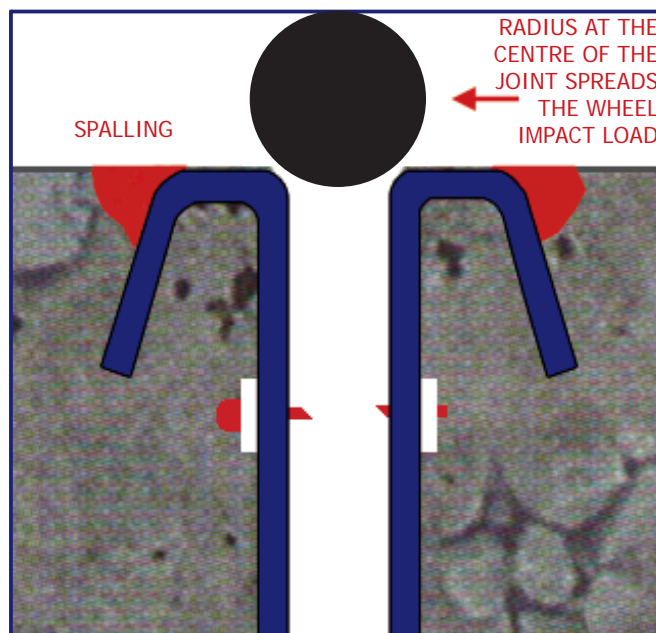
Installation is quick and simple using the micro-adjustable AlphaFix installer. This allows adjustment of the formwork height to the correct level - to superflat floor tolerances where required - and means the flooring contractor makes savings on the installation.

BetaTop Joint for Double Armoured Contraction Joints

An easily installed, adjustable, 'leave-in-place' formwork system with re-usable feet.



BetaTop Joint provides armoured joint arris protection for light to medium duty floor applications. Permaban plate dowel load transfer systems allow two-way lateral movement but, essentially, eliminate vertical movement in the slab, as the concrete shrinks.



Folded Top Section

Other joints exhibit a radius adjacent to the concrete edge that promotes spalling of the concrete adjacent to the joint.



Punched Top Section

BetaJoint eliminates the corner radius by punching with a sharp edge to finish the concrete against thereby significantly reducing the potential for arris spalling.



BetaTop Joint for Double Armoured Contraction Joints

Standard Sizes:
100/125/150/175

Superflat Floors

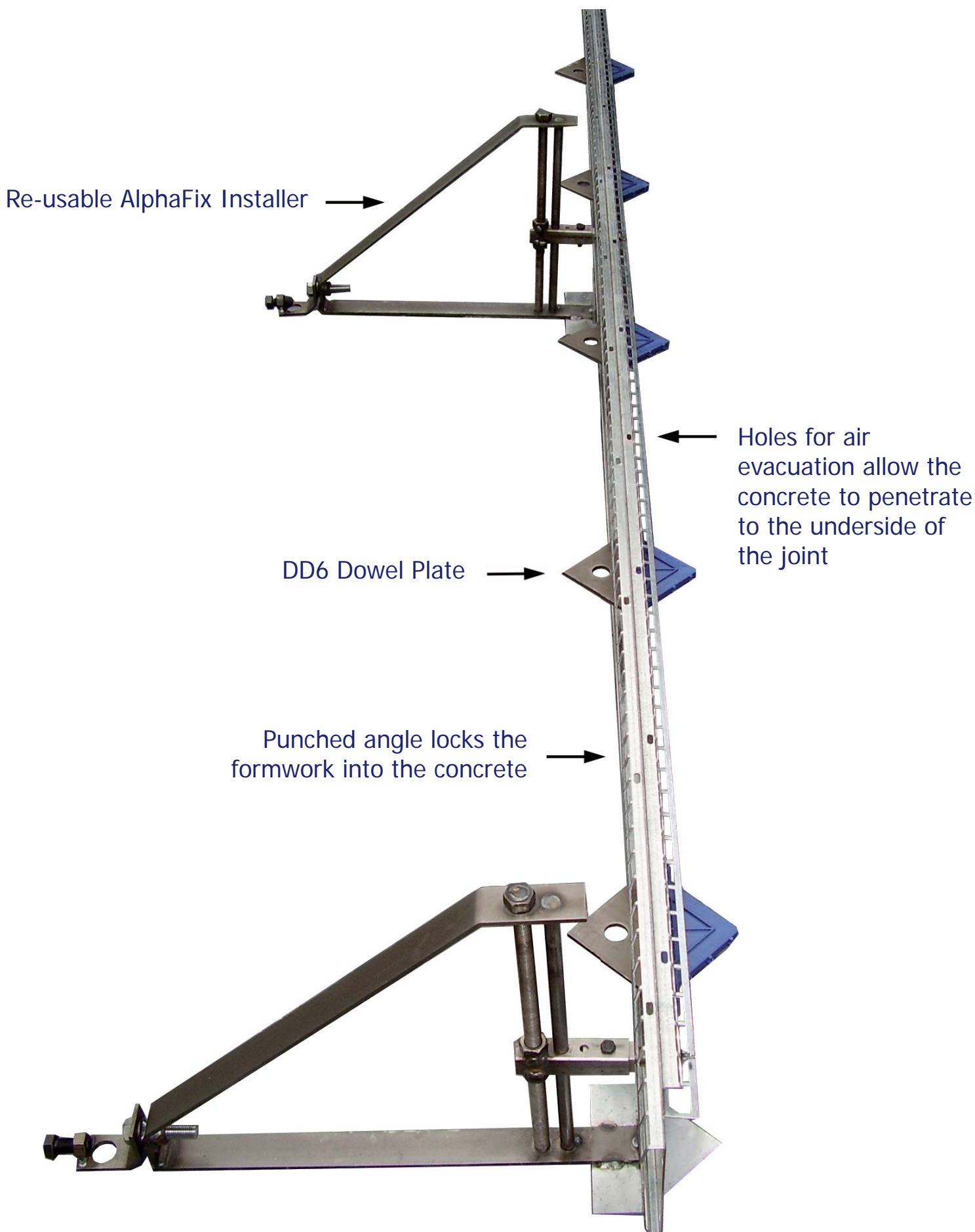
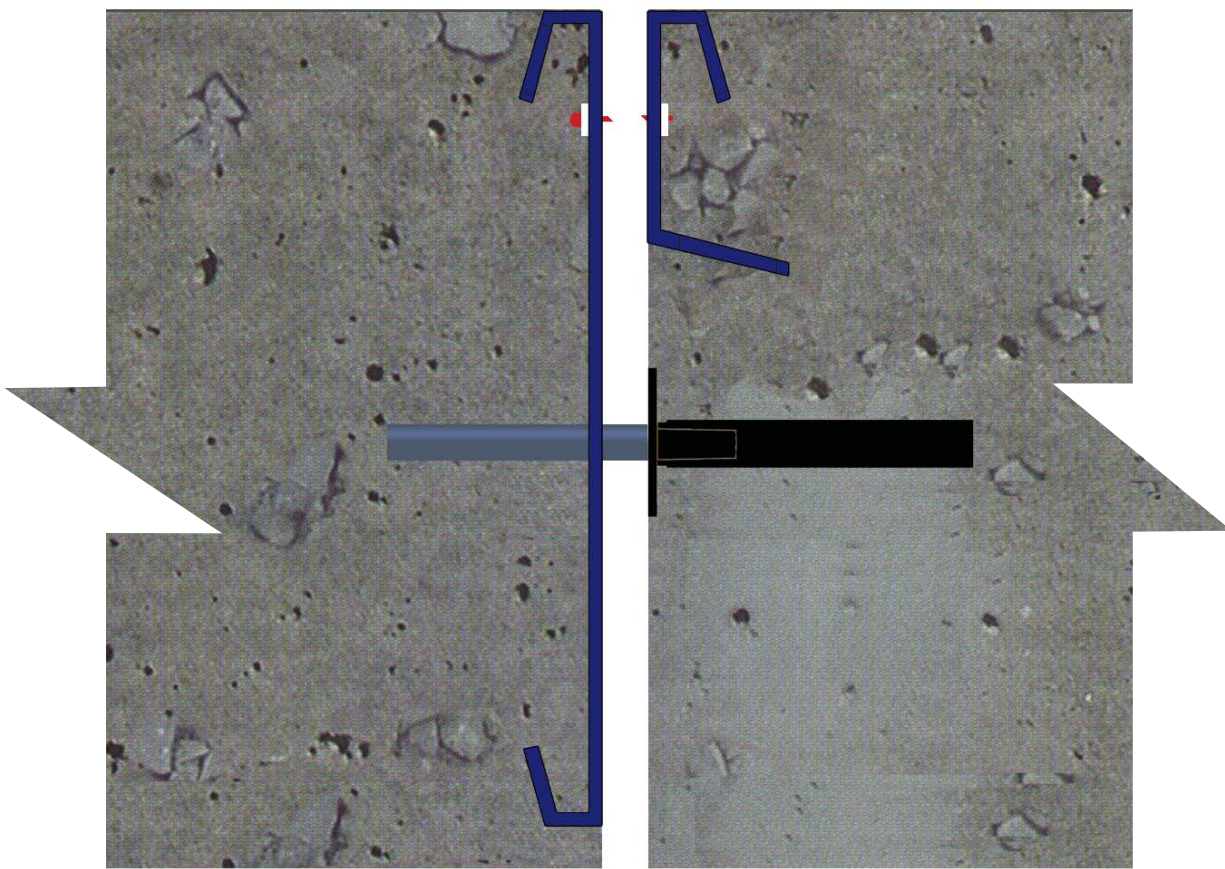
Ideal for use in Superflat slabs as the tied joint under the rack; replacing the timber form tied joint with an adjacent sawn joint. BetaJoint eliminates the difficult task of removing the timber form from over the tie bars which, for this type of joint, can typically utilise 16mm diameter bars, 1500mm in length at 200mm centres.

Load Transfer

BetaTop Joint is punched at 300mm centres with square holes (first inset at 150mm) for use with round or square dowel bars. BetaJoint is also punched at 600mm centres (first inset at 300mm) for use with Permaban plate dowel systems which provide superior load transfer and two-way lateral movement.

BetaJoint

Galvanised 3m length strip in 2mm thick plate. 100-175mm deep to suit slab depths of 100-200mm.



Standard Sizes:
100/125/150/175

BetaTop & BetaStrip 'leave-in-place' Formwork System

For light to medium duty
floor applications.

BetaTop

This formwork has a 12mm wide flat folded and punched top section which provides joint armouring to the concrete arris and the shape effectively locks the joint into the concrete.

BetaStrip

A single 'leave-in-place' 2mm wide jointform for internal or external use in tied or contraction joints.

SVF

(Sealant Void Former)

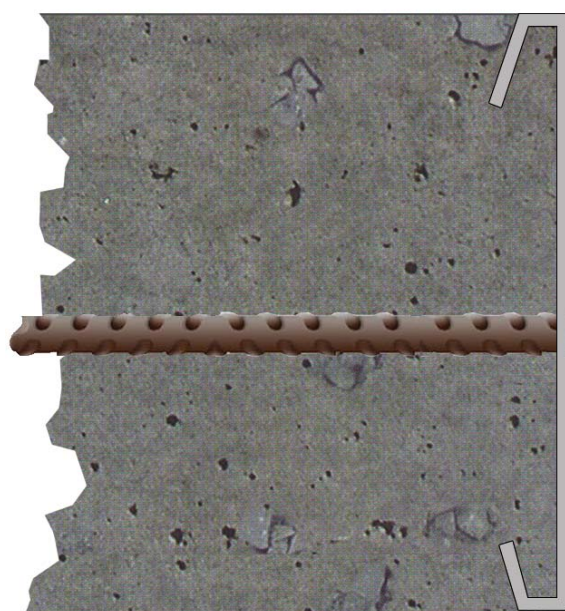
BetaStrip can be used for both internal and external slabs with the optional Sealant Void Former. The hard plastic Sealant Void Former is available to fix to the top of the BetaStrip; it can either be left in after the concrete is placed or removed later and the joint filled with joint sealant - see Joint Sealants literature (Please specify on order).

AlphaJoint 4010

For heavy-duty, free contraction joints you need our AlphaJoint 4010 System supplied with 10 x 40mm square-edged, cold drawn metal strips. Details on the award-winning AlphaJoint 4010 are available from Permaban at:

www.permaban.com

BetaTop & BetaStrip for Tied and Contraction Joints

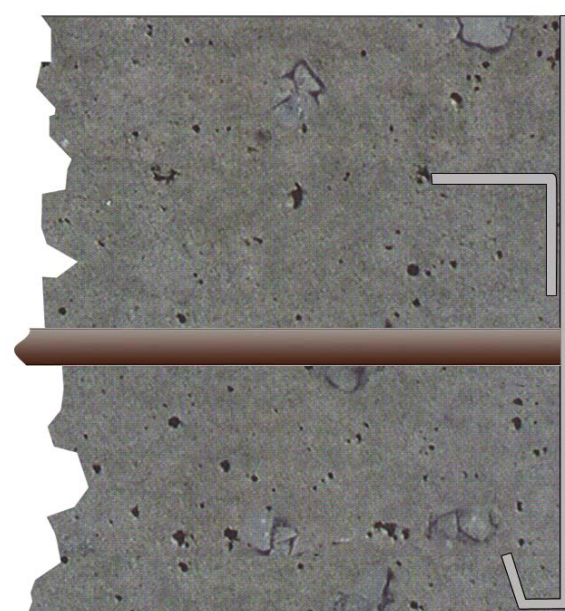


BetaTop for
internal and
external tied or
contraction joints

Folded flat top
section 'locks'
the formwork into
the concrete



BetaTop with 'reusable' Foot



BetaStrip for
Superflat, internal
and external tied or
contraction joints

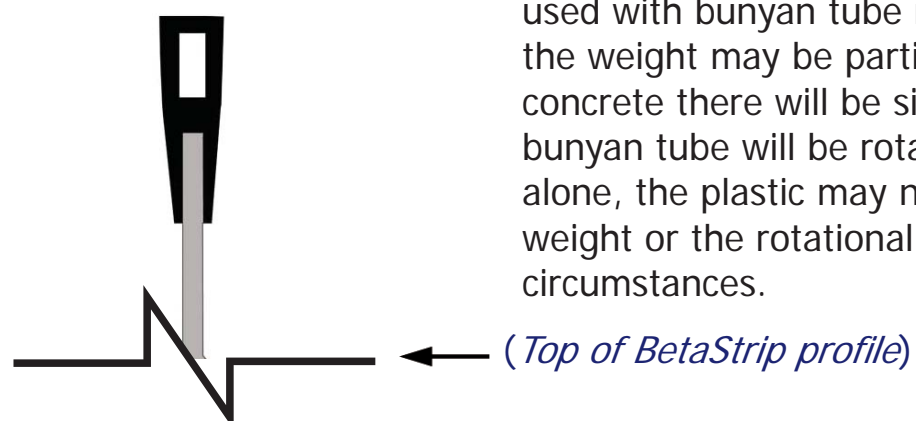
Provides a 2mm
wide strip for
accurate levelling



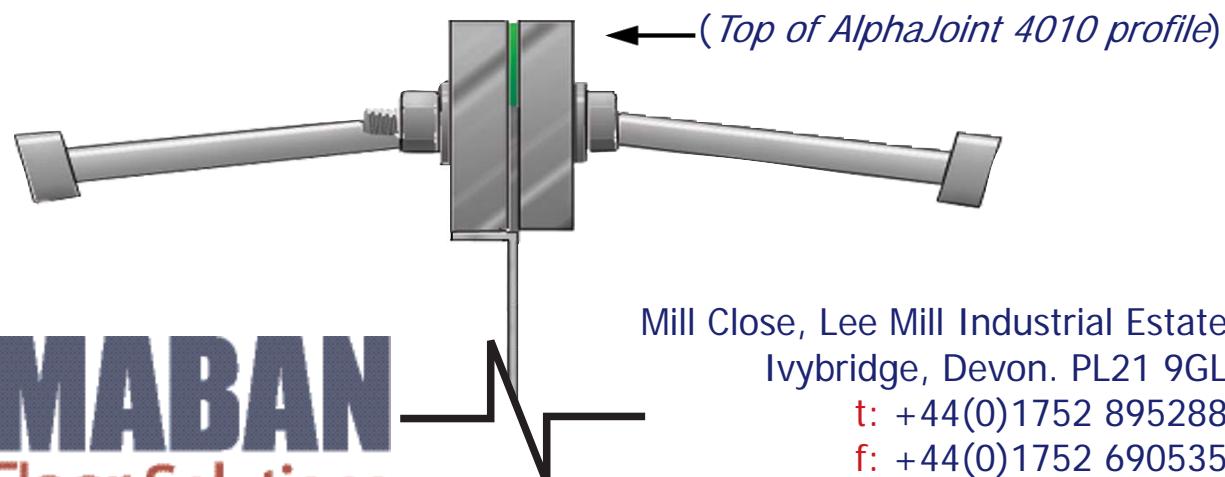
BetaStrip with 'reusable' Foot

Sealant Void Former

NOTE: It is not recommended that the SVF be used with bunyan tube rollers. Even though the weight may be partially supported by the concrete there will be situations where the bunyan tube will be rotating on the plastic alone, the plastic may not stand up to either the weight or the rotational force generated in these circumstances.



(Top of BetaStrip profile)



(Top of AlphaJoint 4010 profile)

PERMABAN
Floor Solutions

Mill Close, Lee Mill Industrial Estate
Ivybridge, Devon. PL21 9GL
t: +44(0)1752 895288
f: +44(0)1752 690535
e: info@permaban.com
www.permaban.com